

# Somerset

REAL COUNTRY REAL ADVENTURE

## Conondale National Park

Imbil  
State Forest



Fig Tree Walk  
780m return, little climb, 20min



Conondale National Park  
Peters Creek

Peters Creek Walk  
450m return, 25m climb, 15min



Conondale National Park  
Charlie Moreland Day Use Area



Little Yabba Circuit  
1.5km, 30m climb, 40min



Piccabeen Circuit  
1.6km, 140m climb, 60min



Conondale National Park  
Booloumba Falls



Booloumba Falls Walk  
2.5km return 70m climb



Conondale National Park  
Booloumba Creek Day Use Area



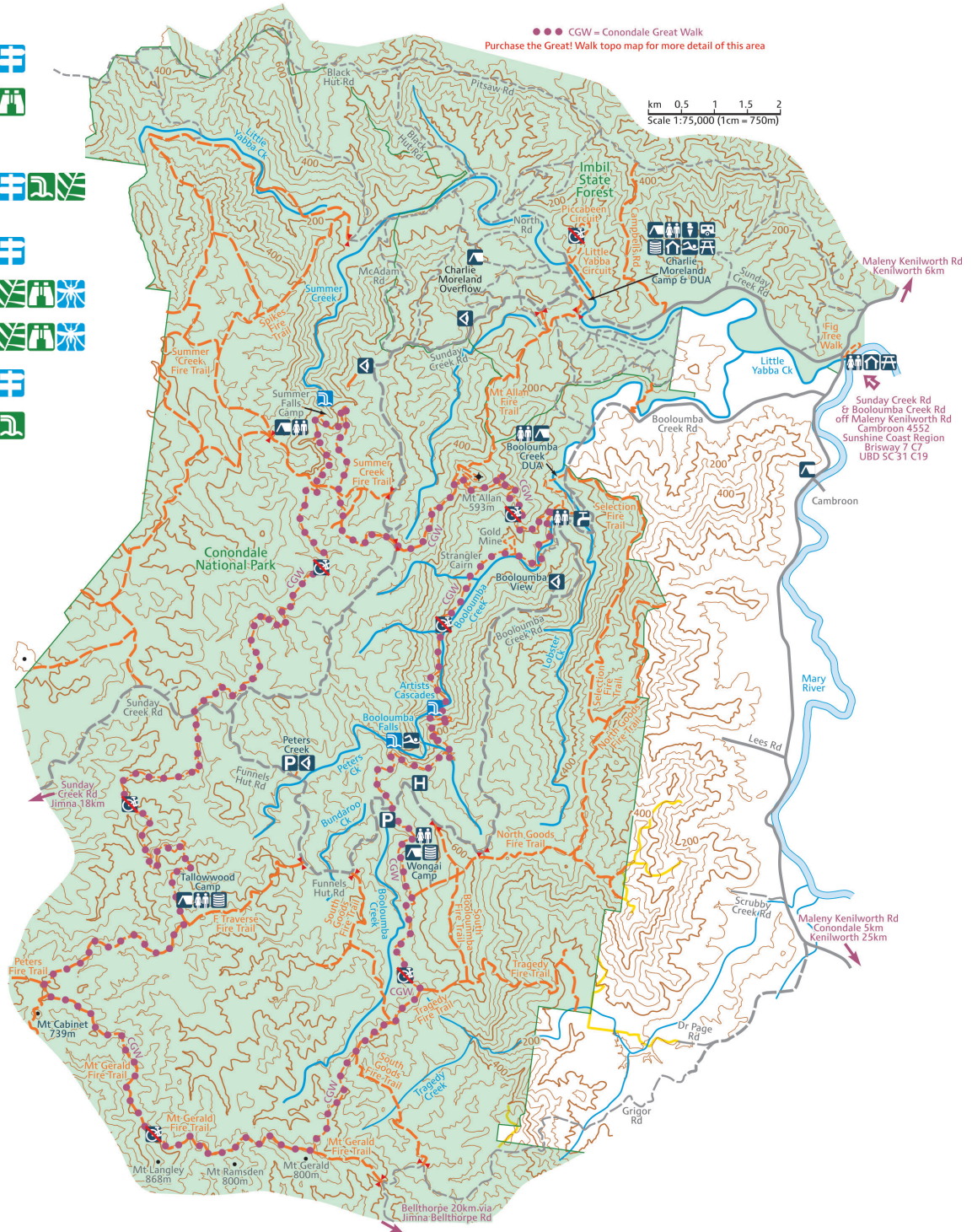
Day Use Area to Strangler Cairn  
5.2km, little climb, 2hr+



Day Use Area to Strangler Cairn via  
Gold Mine 5.8km 80m climb (1%), 2hr+



Conondale Great! Walk  
54km 4,400m climb (8%) 4 days



## VISITOR INFORMATION CENTRES

<b>ESK</b> (07) 5424 2923 82 Ipswich Street	<b>FERNVALE</b> (07) 5427 0200 1483 Brisbane Valley Highway	<b>KILCOY</b> (07) 5422 0440 41 Hope Street	<b>TOOGOO LAWAH</b> (07) 5423 1036 29 Factory Road
---	---	---	--

[experiencesomerset.com.au](http://experiencesomerset.com.au)

#experiencesomerset

#somersetqld

